



Novel finding on anticoagulant activity of *Canna warszewiczii* extracts

Thi Van Anh Nguyen^a, Huong Duong Thi Ly^b, Thi Thom Vu^b, Thi Thu Nguyen^a, Hong Luyen Le^{a,*}

^a Department of Pharmacological, Medical and Agronomical Biotechnology, University of Science and Technology of Hanoi (USTH), Vietnam Academy of Science and Technology (VAST), Hanoi, Vietnam.

^b School of Medicine and Pharmacy, Vietnam National University, Hanoi, Vietnam.

*For correspondence: e-hong.luyen@usth.edu.vn

Received December 10, 2017; accepted March 10, 2018; published online April 15, 2018

ABSTRACT

Canna warszewiczii is a traditional medicine used to treat cardiovascular diseases like coronary artery disease, myocardial ischemia. However, the pharmacological effects of this plant have not been studied yet. This study aimed to investigate for the first time the anti-coagulant activity of *Canna warszewiczii* extracts. Rhizomes and the upper parts (leaves and shoots) of the plant were extracted by 90% ethanol, then fractioned by n-hexane, dichloromethane, ethyl acetate and distilled water. Human plasma collected from healthy volunteers was treated with the ethyl acetate and aqueous extracts at different concentrations (2, 4, 8, 16 mg/mL), then the prothrombin time (PT) and activated partial thromboplastin time (APTT) were measured. The results showed a novel finding that the crude ethyl acetate extracts of both rhizomes and upper parts prolonged significantly both PT and APTT at the concentration of 8 mg/mL and 16 mg/mL ($P < 0.05$). These preliminary results suggest that *Canna warszewiczii* extracts can be a potential source of anti-coagulant compounds and may be useful in the treatment and prevention of thrombotic disorders.

© 2018, Asian Society of Pharmacognosy. All Rights Reserved.

Keywords: Medicinal plants; Anticoagulant; Pharmacology.

INTRODUCTION

Thrombosis, the formation of blood clots in the blood vessels, represents the most common underlying pathology of cardiovascular diseases and is a major contributor to the global disease burden (Ashwini and Asha, 2017). Anticoagulant drugs, which are chemically or biologically synthesized such as heparin, aspirin, warfarin, vitamin K-antagonists and their derivatives, play an important role in the treatment and prevention of thrombosis (Hirsh, O'Donnell *et al.*, 2005). Unfortunately, these drugs have a variety of life-threatening adverse effects including hemorrhage, neutropenia, thrombocytopenia, birth defects, miscarriage, gastrointestinal upset and drug-drug interactions (Hurlen, Abdelnoor *et al.*, 2002; Koenig-Oberhuber and Filipovic, 2016). Thus, there is still an urge for new effective and safe anticoagulant drugs for the treatment and prevention of thrombotic disorders and cardiovascular diseases. Researchers are interested in searching



medicinal plants as a potential source of natural products and herbal medicines, which have safety and eco-friendly image (Ashwini and Asha, 2017; Chua and Koh, 2006).

Canna warszewiczii, a species of the *Canna* genus, belonging to the family Cannaceae, is cultivated in tropical regions as a source of starch. In Vietnam, this plant has been used as a traditional medicine to treat cardiovascular diseases like coronary artery disease, myocardial ischemia. However, anticoagulant activity of this plant has not been studied. However, plant parts of edible *canna* like rhizomes, leaves and flowers are believed to have considerable medicinal properties such as diuretic, demulcent and diaphoretic and they are also used to treat women health related problems (Duke and Ayensu, 1985). Recently, the rhizome extract of *Canna edulis* has been reported to have antioxidant properties (Mishra, Goyal *et al.*, 2011). It is evidenced that consumption of dietary anticoagulants reduces the risk of thrombotic disorders (Matsubara, Matsuura *et al.*, 2001; Guglielmo, Agnese *et al.*, 2002). The present study aimed to evaluate anticoagulant activity of *Canna warszewiczii* extracts. This would give preliminary data to guide further studies for searching potential natural products for prevention and treatment of thrombosis and cardiovascular diseases.

MATERIALS AND METHODS

Plant extractions: The *Canna warszewiczii* plant, harvested in Thai Nguyen province, Vietnam, was air-dried, grounded into fine powder and separated into two parts, rhizomes and the upper parts including leaves and shoots. Both parts were extracted with 90% ethanol (x 3 times) at room temperature, filtered, and then concentrated to dryness using a rotary evaporator. The obtained residue was suspended in distilled water and then extracted with n-hexane, dichloromethane and ethyl acetate and aqueous. After evaporating solvents with the rotary evaporator, the obtained residues were diluted in DMSO 10% to give concentrations of 20, 40, 80 and 160 mg/mL.

Blood collection and plasma preparation: Blood samples were collected from healthy volunteers, aged 18-25 years, with no history of thrombosis or abnormal bleeding, active neoplasia or active inflammatory disease. Drugs that affected the blood coagulation process had not been taken within two weeks and no food intake had been done at least 3 hours before taking blood. 3 mL venous blood withdrawn from each volunteer was added into a plastic centrifuge tube containing 3.2% trisodium citrate as an anticoagulant (9:1 ratio). Plasma was obtained by centrifugation (3000 × g, 10 minutes).

In vitro anticoagulant assays: Anticoagulation activity of ethyl acetate and aqueous extracts was determined by measuring PT (prothrombin time) and activated partial prothrombin time (APTT) using Sysmex CS-2100i machine (Japan). For both tests, 450 µL plasma was mixed with 50 µL of plant extracts to give final concentrations of 2, 4, 8, 16 mg/mL, then incubated at 37°C for 5 minutes before measuring PT and APTT. Heparin 0.2IU and DMSO 1% in plasma was used as positive and negative control, respectively (Li, Wang *et al.*, 2013) (Li *et al.* 2013). The experiments were repeated 5 times.



Data analysis: Data were analyzed using Microsoft excel 2007 and GraphPad Prism 7.0. The independent student's t test and the one-way ANOVA test were used to assess the differences among different concentrations, and between the test and control groups. Correlations between the extraction concentration and PT or APTT values were analyzed using the Pearson's rank correlation test. P value ≤ 0.05 was considered statistically significant.

RESULTS

Effect of the ethyl acetate extract of the plant rhizome on PT and APTT: The data indicates that the effect on PT and APTT of the ethyl acetate extract of rhizomes was dependent on concentrations of the plant extracts ($p < 0.05$)(Table 1). Higher concentrations were associated with higher values of PT and APTT (Pearson's rank correlation test, $r = 0.9761$, $P = 0.0239$ for PT, and $r = 0.9766$, $P = 0.0234$ for APTT). The ethyl acetate rhizome extracts at the concentrations of 2 and 4 mg/ml did not prolong PT or APTT ($P > 0.05$). However, as can be seen in Table 1, both PT and APTT were prolonged significantly at concentrations of 8 mg/mL and 16 mg/mL ($P < 0.05$).

Table 1. Effect of the ethyl acetate extract of the rhizome on PT and APTT

Sample	N	PT (s)	P-value (Compared to DMSO 1%)	APTT(s)	P-value (compared to DMSO 1%)
DMSO 1%	5	11.56 \pm 0.65		29.64 \pm 1.79	
Heparin 0.2IU	5	12.24 \pm 0.76	0.1689	45.7 \pm 5.62	0.0009
EAC 2 mg/mL	5	11.96 \pm 0.64	0.9677	30.42 \pm 2.06	0.5412
EAC 4 mg/mL	5	12.26 \pm 0.61	0.9306	31.54 \pm 2.2	0.1799
EAC 8mg/mL	5	13.62 \pm 1.05	0.0058*	36.42 \pm 3.28	0.0037*
EAC 16 mg/mL	5	19.72 \pm 0.87	< 0.001*	58.14 \pm 8,16	< 0.001*
P value (ANOVA test)		0.0023*		< 0.0001*	

EAC: ethyl acetate extract of rhizome, data were expressed as mean \pm SD

Effect of the ethyl acetate extract of the plant aerial parts on PT and APTT: Similarly, both PT and APTT values were positively associated with the concentrations ($r = 0.97$, $p = 0.03$, and $r = 0.967$ $p = 0.032$, respectively). As shown in Table 2, at the concentration of 2 and 4 mg/mL, there was no difference in both PT and APTT between the negative control and the ethyl acetate extract of the upper plant parts ($P > 0.05$). However, the ethyl acetate extracts at concentration of 8 and 16 mg/mL prolonged PT and APTT significantly ($p < 0.05$).

Table 2. Effect of the ethyl acetate extract of the aerial part on PT and APTT values

Samples	N	PT (s)	P-value (Compare to DMSO 1%)	APTT (s)	P-value (compare to DMSO 1%)
DMSO 1%	5	11.85 \pm 0.78		29.8 \pm 1.67	
Heparin 0.2IU	5	12.24 \pm 0.76	0.1689	45.7 \pm 5.62	0.0009*
EAL 2 mg/ml	5	11.34 \pm 0.44	0.5514	28.86 \pm 1.48	0.4747
EAL 4 mg/ml	5	12.12 \pm 0.37	0.1343	31.68 \pm 2.3	0.1572
EAL 8 mg/ml	5	14.68 \pm 0.53	<0.0001*	42.64 \pm 6.12	0.0019*
EAL 16 mg/ml	5	29.24 \pm 1.94	<0.0001*	107.84 \pm 11.59	<0.001*
P value (ANOVA test)		< 0.0001*		< 0.0001*	

*EAL: Ethyl acetate extracts of Canna warszewiczii upper ground parts
Data were expressed as mean \pm SD*



Effect of the aqueous extract of the plant on PT, APTT values: The effect of the aqueous extracts of rhizomes on both PT and APTT was not different among different concentrations and in comparison with the negative control ($P > 0.05$). Similarly, the aqueous extracts of the upper parts (leaves and shoots) did not affect both PT and APTT parameters ($P > 0.05$).

Comparison on PT and APTT values between extracts: As shown in figure 1 and 2, among 4 extracts tested, the ethyl acetate extract of the upper parts showed the highest values of PT and APTT parameters, followed by ethyl acetate extract of rhizomes ($P < 0.05$). Moreover, at 16 mg/mL, the ethyl acetate extract of the upper parts showed very high APTT value (107.84 seconds), which means that this extract concentration may cause a bleeding risk. The water extracts of both rhizome and leaves did not have any effect on both PT and APTT.

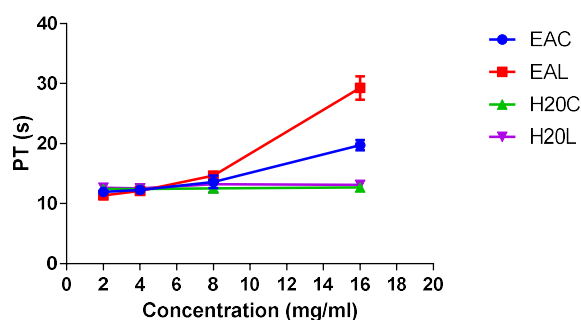


Figure 1. The activity of 4 extracts from *Canna warszewiczii* on PT. EAC: ethyl acetate extracts of rhizomes, EAL: ethyl acetate extracts of upper parts, H2OC: water extracts of rhizome, H2OL: water extracts of upper parts

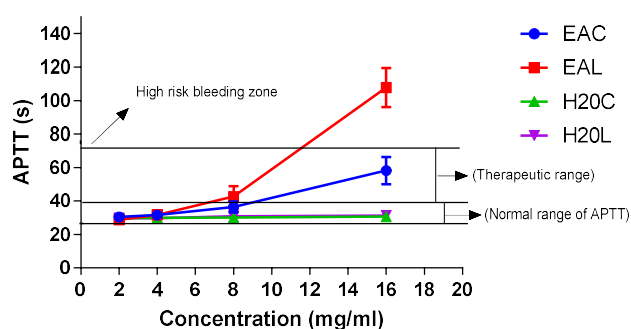


Figure 2. The activity of 4 extracts from *Canna warszewiczii* on APTT. EAC: ethyl acetate extracts of rhizomes, EAL: ethyl acetate extracts of upper parts, H2OC: water extracts of rhizome, H2OL: water extracts of upper parts

DISCUSSION

A rich potential source of novel antithrombotic agents is hidden in herbal medicines and many excellent pharmacological effects have been studied (Tsai, Lin *et al.*,



2000; Ballabeni, Tognolini *et al.*, 2007). Recently, there has been an increasing interest to isolate thrombolytic agents and anti-thrombotic compounds from food and natural sources, which are presumed to be safe and effective. For example, chrysophanol-8-O-glucoside, an anthraquinone derivative in *Rhubarb* found in 2011, had anti-coagulation and anti-platelet aggregation activity. This substance unchanged PT and only affected APTT, indicating that it could influence on the intrinsic pathway of coagulation (Seo, Ngoc *et al.*, 2012). The present study showed for the first time that the ethyl acetate extracts of both rhizome part and the upper parts (leaves and shoots) of *Canna warszewiczii* prolonged coagulation parameters PT and APTT parameters. The PT test measures the blood clotting time of the extrinsic pathway, while the APTT test measures the intrinsic pathway of coagulation. The normal range of the PT value is from 11 to 13 seconds, and this of APTT is from 28.5 to 38.5 seconds (Pagana and Pagana, 2017). The therapeutic value for both PT and APTT is about 1.5 to 2.5 times above the normal values. In this study, both the ethyl acetate extract of rhizomes and the upper parts of *Canna warszewiczii* exerted the anti-coagulant effect at 8 mg/mL of concentration. At 16 mg/ml of the upper parts, the *in vitro* test showed that both PT and APTT were very high (mean, 29.24 and 107.84 seconds, respectively), which may suggest a high risk of bleeding. These preliminary results indicate that *Canna warszewiczii* exhibited anti-coagulant activity and influenced on both extrinsic and intrinsic pathway or even the common pathway of coagulation. However, to clarify which factors involved in the mechanism of anti-coagulant activity, further studies are needed. Furthermore, this study was conducted with crude extracts; thus, intensive extractions, enrichment of active compounds, and testing of lower concentrations should be carried out in further experiments. Particularly, determining the main compounds with potent anticoagulation activity is required. Natural agents that inhibit coagulation process are of potential interest for the prevention of atherosclerosis and coronary artery disease (Ashwini and Asha, 2017).

CONCLUSION

In conclusion, the present study reported a novel finding on anti-coagulant properties of the ethyl acetate extract of leaves, shoots and rhizomes of *Canna warszewiczii*, and the upper parts showed better anti-coagulant activity than rhizomes. These plant extracts prolonged both PT and APTT parameters, thus could be a potential source of anti-coagulant and anti-thrombotic agents and may act as a promising alternative in the treatment and prevention of thrombotic disorders.

ACKNOWLEDGMENTS

This project was funded by University of Science and Technology of Hanoi, Vietnam Academy of Science and Technology.

DECLARATION OF CONFLICT OF INTEREST

No conflict of interest to declare.

REFERENCES

Ashwini U, Asha S (2017). A Preliminary Novel Finding on Invitro Anti-Coagulant Activity of *Acalypha indica* Linn Leaf Extracts. Int J Pharm Clin Res.9(5):425-9.



ASIAN JOURNAL OF PHARMACOGNOSY

Asian J. Pharmacogn 2(2) 2018, 5-10

© 2018, Asian Society of Pharmacognosy. All Rights Reserved.

eISSN-0128-1119

- Hirsh J, O'Donnell M, Weitz JI (2005). New anticoagulants. *Blood*.105(2):453-63.
- Hurlen M, Abdelnoor M, Smith P, Erikssen J, Arnesen H (2002). Warfarin, Aspirin, or Both after Myocardial Infarction. *New England Journal of Medicine*.347(13):969-74.
- Koenig-Oberhuber V, Filipovic M (2016). New antiplatelet drugs and new oral anticoagulants. *BJA: British Journal of Anaesthesia*.117(suppl_2):ii74-ii84.
- Chua TK, Koh HL (2006).Medicinal Plants as Potential Sources of Lead Compounds with Anti-Platelet and Anti-Coagulant Activ. *Mini-Reviews in Medicinal Chemistry*.6(6):611-24.
- Duke JA, Ayensu ES (1985). *Medicinal plants in China*. Reference publication (Algonac, Michigan).Vol 1:232.
- Mishra T, Goyal AK, Middha SK, Sen A (2011). Antioxidative activities of *Canna edulis* Ker Gawl. *Indian J Nat Prod Resour*.2(3):215-321.
- Matsubara K, Matsuura Y, Bacic A, Liao M-L, Hori K, Miyazawa K (2001). Anticoagulant properties of a sulfated galactan preparation from a marine green alga, *Codium cylindricum*. *International Journal of Biological Macromolecules*.28(5):395-9.
- Guglielmone HA, Agnese AM, Núñez Montoya SC, Cabrera JL (2002). Anticoagulant effect and action mechanism of sulphated flavonoids from *Flaveria bidentis*. *Thrombosis Research*.105(2):183-8.
- Li CT, Wang HB, Xu BJ (2013). A comparative study on anticoagulant activities of three Chinese herbal medicines from the genus *Panax* and anticoagulant activities of ginsenosides Rg1 and Rg2. *Pharmaceutical Biology*.51(8):1077-80.
- Tsai I-L, Lin W-Y, Teng C-M, Ishikawa T, Doong S-L, Huang M-W, et al. (2000). Coumarins and Antiplatelet Constituents from the Root Bark of *Zanthoxylum schinifolium*. *Planta Med*.66(7):618-23.
- Ballabeni V, Tognolini M, Bertoni S, Bruni R, Guerrini A, Rueda GM, et al. (2007). Antiplatelet and antithrombotic activities of essential oil from wild *Ocotea quixos* (Lam.) Kosterm. (Lauraceae) calices from Amazonian Ecuador. *Pharmacological Research*.55(1):23-30.
- Seo EJ, Ngoc TM, Lee S-M, Kim YS, Jung Y-S (2012). Chrysophanol-8-O-glucoside, an anthraquinone derivative in rhubarb, has antiplatelet and anticoagulant activities. *Journal of Pharmacological Sciences*.118(2):245-54.
- Pagana K, Pagana T. (2017). *Mosby's Manual of Diagnostic and Laboratory Tests*. 6th ed. Elsevier, editor 2017.